

ARDELL ARMSTRONG

SILK SCREEN PRINTMAKER

A LAST OPPORTUNITY TO ACQUIRE
REMAINING ORIGINAL SILK SCREEN PRINTS
(UNFRAMED) BY THIS DISTINCTIVELY
TASMANIAN ARTIST



2012 UNLIMITED

PO Box 157 NORTH HOBART, TASMANIA, AUSTRALIA 7002

PH 04 1988-2012, 03 62788422

INTERNET: WWW.2012.COM.AU (SITE2). EMAIL: 2012@2012.COM.AU

AFFORDABLY PRICED

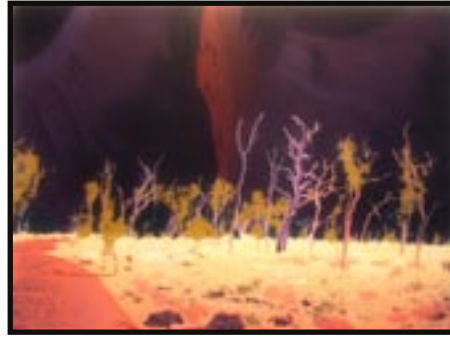
PH. 04 1988-2012

ARDELL ARMSTRONG SILK SCREEN PRINTS CATALOGUE. PAGE 1

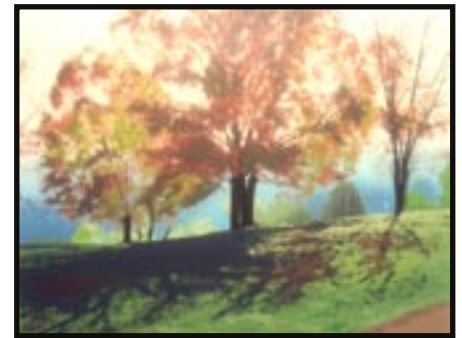
COLOURS ARE APPROXIMATE ONLY



Alpine tapestry, Mt. Wellington A047



At the Foot of the Great Rock A026



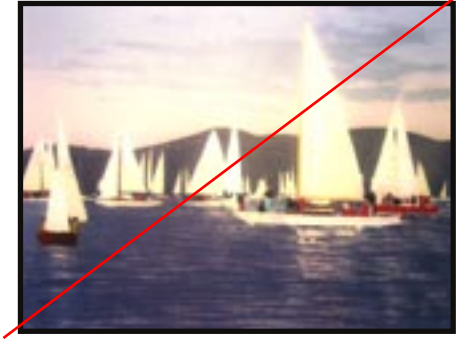
Autumn Morning A035



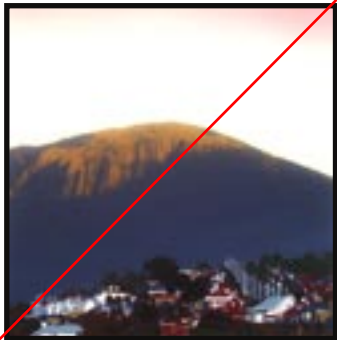
Burgeoning Spring, W Dock A053



Citizens at Salamanca A046



Citizens Sailing A009



City backdrop A024



City Gateway A031



City Sunday A006



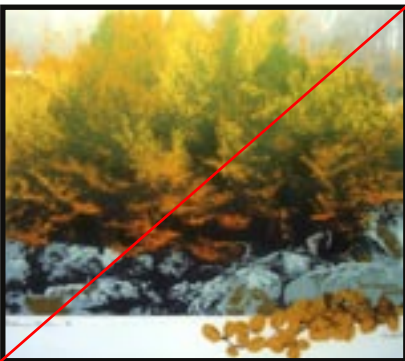
Convict Built A045



Dockside, Hobart A011



Duck Pond A023



Endemic Autumn A013



Festival of Tall Ships A004



Frozen Tarn, Mt. Field A016

ARDELL ARMSTRONG SILK SCREEN PRINTS CATALOGUE. PAGE 2

COLOURS ARE APPROXIMATE ONLY



Geilston Bay A021



Goats Beard by the River A039



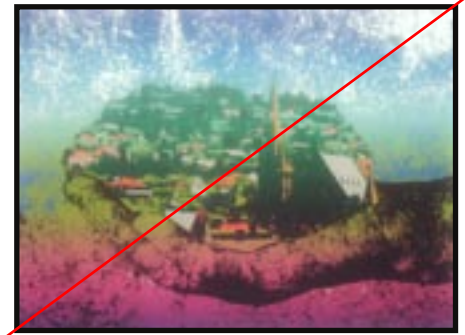
Grass Trees NE Coast tas. A007



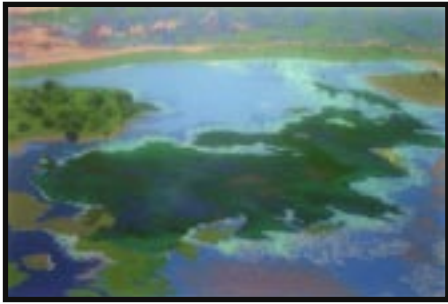
Harbour at Noon A061



Harbour Scene, Hobart A008



He Has the Whole World. A018



Kakadu Country A052



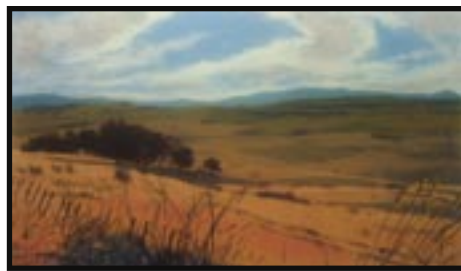
Late Winter Snow A056



Mangolias in Spring A049



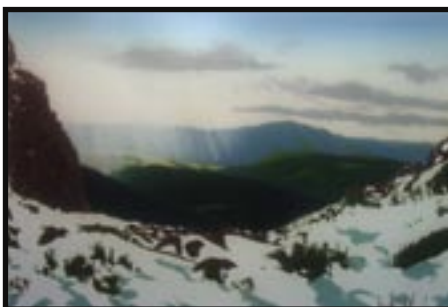
Mirrored Mountain A002



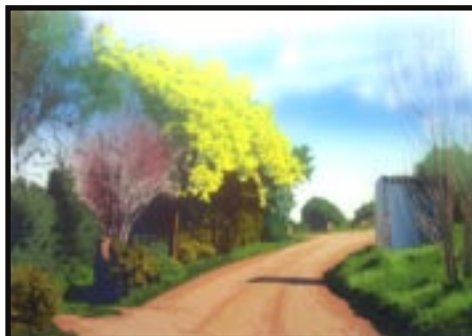
North from Cove Hill A048



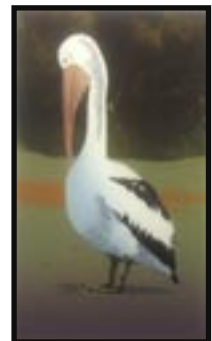
Old Orchard Refurnished A014



On Ben Lomand A050



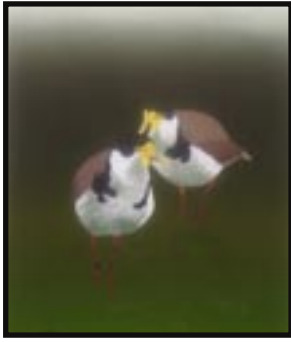
One Spring Morning A051



Pensive Pelican A044

ARDELL ARMSTRONG SILK SCREEN PRINTS CATALOGUE. PAGE 3

COLOURS ARE APPROXIMATE ONLY



Plover Print A042



Port Arthur Backdrop A019



Red sails A036



River & Mts. Below A030



River in a Rural Setting A027



River in Spring A034



River in the Morning..Hayes A016 B



Sandstone in Summer A041



Snow Gums, Mt. Field A058



Sparkling Waters, Pelican P. A012



Spring Gale A038



Spring in the City A020



Spring in the Suburbs A033



Sullivans Cove A059



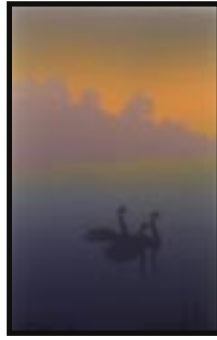
Summer Splendour- Cradle Mt. A037

ARDELL ARMSTRONG SILK SCREEN PRINTS CATALOGUE. PAGE 4

COLOURS ARE APPROXIMATE ONLY



Summers Day, Forest... A010



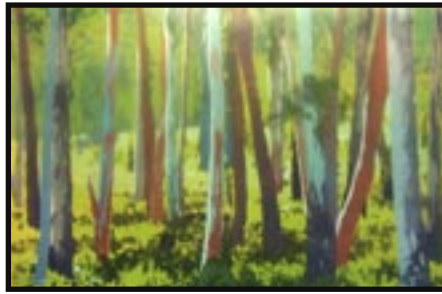
Swans at Evening A022



Tasmanians II A025



The Big Top in Town A043



The Forest for the Trees A062



The Last Trip A040



The Pathway A003



The Rock A028



Tinderbox A001



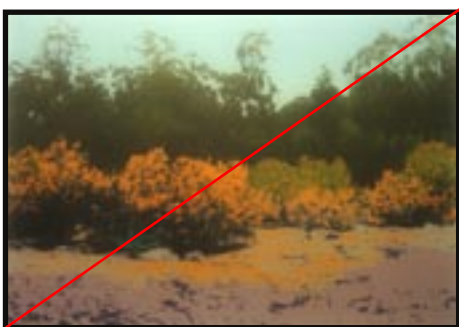
Underneath the Apple Tree A017



Vinyards at Marion Bay A005



Westella A060



Wild Flowers, West Coast A015



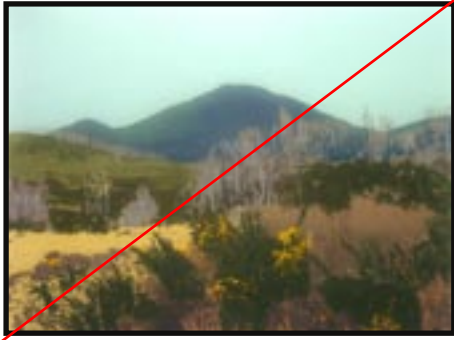
Winter Rhapsody A057



Wrest Pt. On the Derwent A032

ARDELL ARMSTRONG SILK SCREEN PRINTS CATALOGUE. PAGE 5

ALL UNFRAMED. COLOURS ARE APPROXIMATE ONLY



Zeehan Landscape A054



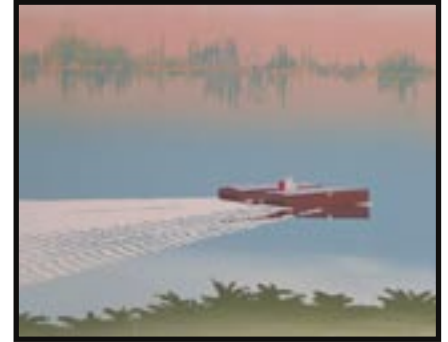
Zeehan Serenade A055



Afternoon Light A092



Autum Sowing A087



Barges on the Derwent A081



Barn at Clerborne A091



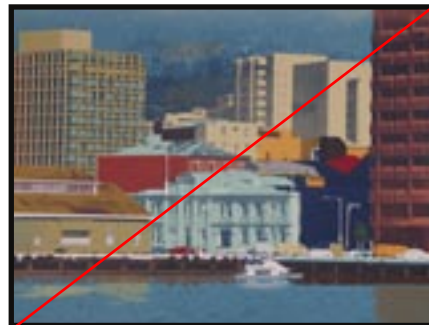
Battery Point from Wrest Point A079



Blue Print A094



Cape Barren Geese A069



City Front, Hobart A077



City Setting A083



Country Road Maria Island A075



Daybreak on the Derwent A072



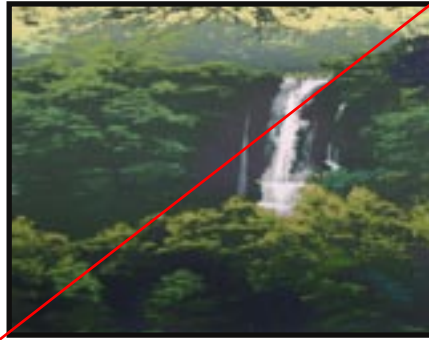
Dockwater A067

ARDELL ARMSTRONG SILK SCREEN PRINTS CATALOGUE. PAGE 6

ALL UNFRAMED. COLOURS ARE APPROXIMATE ONLY



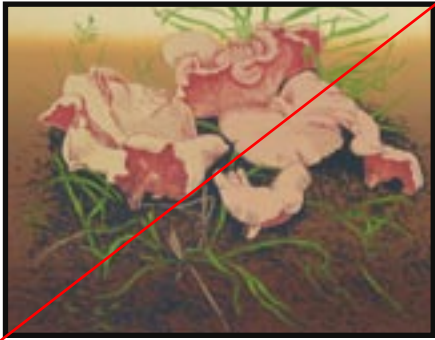
Dreamscape Huon A065



Filtered Light, Catherine Falls A086



From the MountainTop A064



Fungi A070



Green Valley A095



Hobart Docks A073



Hobart waterfront A071



Hunter Street A068



Looking back in Hunter St. A093



Moorings A084



Night Scene Battery Point A063



Over Richmond Way A080



River in the evening A085



Rosellas on the Drive A082



Tasmaniana I A090

ARDELL ARMSTRONG SILK SCREEN PRINTS CATALOGUE. PAGE 7

ALL UNFRAMED. COLOURS ARE APPROXIMATE ONLY



Tasmanians III A089



Victoria Street, Hobart A088



Windermere Bay, late Afternoon A074



Window in Ruins A078

ARDELL ARMSTRONG

SILK SCREEN PRINTMAKER

BIOGRAPHICAL NOTES

STUDIED: FIRST STUDIED ART AT HOBART TECHNICAL COLLEGE IN THE 1940S. LATER AFTER RAISING A FAMILY ENROLLED AT COLLEGE OF ADVANCED EDUCATION (1976-79), GRADUATING WITH A DIPLOMA OF ART IN 1980.

SPECIALIZED: FROM 1980 ON SHE CONCENTRATED ALMOST EXCLUSIVELY ON THE MEDIUM OF SILK SCREEN PRINTING.

EXHIBITED:

1981	ART CENTRE GALLERY, HOBART (GROUP OF THREE)
1982	"ARDELL ARMSTRONG SERIGRAPHY EXHIBITION"
1983	"SCREEN PRINT EXHIBITION"
1984	STRICKLAND ART GALLERY, HOBART (TWICE) COUGHTON GALERIES, HOBART (SOLO) GALLERY Z, ZEEHAN, TASMANIA (SOLO) RIALTO GALLERY RESTAURANT, BURNIE, TASMANIA. (SOLO)
1985	"THE CITY, RIVER & BEYOND", SALAMANCA PLACE GALLERY, HOBART. (SOLO) STRICKLAND GALLERY, HOBART (GROUPS)
1986	CITY AND CITIZENS - SULLIVANS COVE.
1986	"LANDSCAPES AND CITYSCAPES". FREEMAN GALLERY, HOBART.
1988	"EARTHBOUND & AIRBORNE", SADDLERS COURT GALLERY, RICHMOND TAS. (SOLO)
1989	"WATER", DON CAMILLO RESTAURANT. (SOLO)

AWARDS: AWARDS INCLUDE WINNING THE STATE ENTRY OF THE COMBINED RURAL TRADERS 1982; THIRD PRIZE ZEEHAN CENTENARY EXHIBITION 1982; TASMANIAN ART EXHIBITION PRIZE; BURNIE COASTAL ART GROUP, 1983; FIRST PRIZE, ANNUAL ART ACQUISITION GALLERY Z, ZEEHAN, TASMANIA 1984; FIRST PRIZE PRINTMAKING AWARD AT CIRCULAR HEAD ARTS FESTIVAL 1987; FIRST PRIZE ANY OTHER MEDIUM TASMANIAN ART EXHIBITION, BURNIE, 1989.

CURRENT COLLECTIONS:

PARLIAMENT HOUSE, CANBERRA; WEST SIDE MOTOR INN; SHERATON HOTEL HOBART; ART BANK; AUSTRALIAN EMBASSY, MOSCOW, USSR; TASMANIAN LAW COURTS AND THE EDUCATION DEPARTMENT HEAD OFFICE; "DUNEDIN CITY COUNCIL, DUNEDIN, NEW ZEALAND

HER PLACE IN TASMANIAN ART:

FEW ARTISTS HAVE STAMPED THEIR WORK WITH SUCH A DISTINCTIVELY TASMANIAN FLAVOUR. ANYONE VIEWING THESE PRINTS --WHETHER RESIDENT OR VISITOR -- IS STRUCK WITH THE SKILL WITH WHICH THE ARTIST HAS CAPTURED THE TASMANIAN LANDSCAPE AND HOBART CITYSCAPES. SHE HAS BROUGHT TO THESE SUBJECTS A MASTERY OF TECHNIQUE COMBINED WITH AN UNERRING EYE FOR COMPOSITION. HER WORKS CONFIRM HER PLACE AS A FOREMOST ARTIST IN THE PRINT MEDIUM.